

MEDBONE

Jamshidi bone marrow biopsy system (MB), also available in the explant/transplant version (EM)



EXPLANT/TRANSPLANT VERSION



Jamshidi bone marrow biopsy needle designed following classical and reliable features, in order to perform bone marrow biopsy (**MB**) and bone marrow explant/transplant (**EM**) in the iliac crest.

Technical characteristics:

- Ergonomic handle.
- Available in different tip versions: Diamond, Aspiration, Fish Mouth or Atraumatic.
- Luer Lock connection for syringe.
- Remover guide provided with indicators to facilitate the sample expulsion and that allows sample's length check.
- Provided with a special cap for a safe removal of the sample.
- Sterilized by ETO, shelf life 5 years.

medax
medical devices

www.medax.it

MEDBONE

Jamshidi bone marrow biopsy system (MB), also available
in the explant/transplant version (EM)

GAUGE	COLOUR	LENGHT (MM)			
7	Yellow	07 050	07 070	07 100	07 150
8	Dark Green	08 050	08 070	08 100	08 150
9	Pink	09 050	09 070	09 100	09 150
11	White	11 050	11 070	11 100	11 150
13	Light blue	13 050	13 070	13 100	13 150

Different sizes on demand

Explant/transplant version NOT available for gauge 7

Ordering information:

MEDBONE DIAMOND TIP: M B GAUGE LENGHT 0 0

MEDBONE ASPIRATION TIP: M B GAUGE LENGHT 0 1

MEDBONE FISH MOUTH TIP: M B GAUGE LENGHT 0 2

MEDBONE ATRAUMATIC TIP: M B GAUGE LENGHT 0 3

MEDBONE WHISTLE TIP: M B GAUGE LENGHT 0 4

MEDBONE BEVELED TIP: M B GAUGE LENGHT 0 5

MEDBONE Explant/Transplant VERSION: E M GAUGE LENGHT 0 0

SINGLE BOX: 10 PCS.



www.medax.it

Medax Srl Unipersonale · via R. Piva 1/a · 46025 Poggio Rusco (MN) Italy · tel. +39 0386 522157-132 · fax +39 0386 522156 · customercare@medax.it

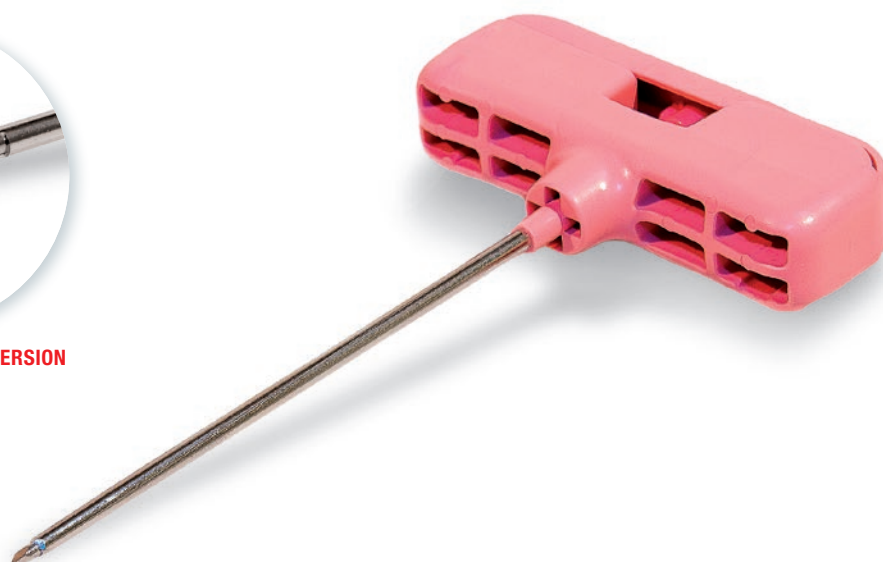


NEO OXUS

Jamshidi bone marrow biopsy system (NX), also available in the explant/transplant version (EN)



EXPLANT/TRANSPLANT VERSION



Jamshidi bone marrow biopsy needle designed following classical and reliable features, in order to perform bone marrow biopsy (**NX**) and bone marrow explant/transplant (**EN**) in the iliac crest.

Technical characteristics:

- Ergonomic handle.
- Available in different tip versions: Diamond, Aspiration, Fish Mouth or Atraumatic.
- Luer Lock connection for syringe.
- Remover guide provided with indicators to facilitate the sample expulsion and to be able during the procedure to check the length of the sample.
- Provided with a special cap for a safe removal of the sample.
- Sterilized by ETO, shelf life 5 years.

NEO OXUS

Jamshidi bone marrow biopsy system (NX), also available in the explant/transplant version (EN)

GAUGE	COLOUR	LENGHT (MM)			
7	Yellow	07 050	07 070	07 100	07 150
8	Dark Green	08 050	08 070	08 100	08 150
9	Pink	09 050	09 070	09 100	09 150
11	White	11 050	11 070	11 100	11 150
13	Light blue	13 050	13 070	13 100	13 150

Different sizes on demand

Explant/transplant version NOT available for gauge 7.

Ordering information:

NEO OXUS DIAMOND TIP: N X 0 0

NEO OXUS BONE MARROW ASPIRATION TIP: N X 0 1

NEO OXUS FISH MOUTH TIP: N X 0 2

NEO OXUS ATRAUMATIC TIP: N X 0 3

NEO OXUS BEVELED TIP: N X 0 5

NEO OXUS EXPLANT/TRANSPLANT VERSION: E N 0 0

SINGLE BOX: 10 PCS.



www.medax.it

Medax Srl Unipersonale · via R. Piva 1/a · 46025 Poggio Rusco (MN) Italy · tel. +39 0386 522157-132 · fax +39 0386 522156 · customercare@medax.it



OXUS

Jamshidi bone marrow biopsy system (OX), also available in the explant/transplant version (EO)



EXPLANT/TRANSPLANT VERSION



Jamshidi bone marrow biopsy needle designed following classical and reliable features, in order to perform bone marrow biopsy (**OX**) and bone marrow explant/transplant (**EO**) in the iliac crest.

Technical characteristics:

- Ergonomic handle.
- Available in different tip versions: Diamond, Aspiration, Fish Mouth or Atraumatic.
- Luer Lock connection for syringe.
- Remover guide provided with indicators to facilitate the sample expulsion and to be able during the procedure to check the length of the sample.
- Provided with a special cap for a safe removal of the sample.
- Sterilized by ETO, shelf life 5 years.

medax
medical devices

www.medax.it

OXUS

Jamshidi bone marrow biopsy system (OX), also available in the explant/transplant version (E0)

GAUGE	COLOUR	LENGHT (MM)			
		07 050	07 070	07 100	07 150
7	Yellow	07 050	07 070	07 100	07 150
8	Dark Green	08 050	08 070	08 100	08 150
9	Pink	09 050	09 070	09 100	09 150
11	White	11 050	11 070	11 100	11 150
13	Light blue	13 050	13 070	13 100	13 150

Different sizes on demand

Explant/transplant version NOT available for gauge 7

Ordering information:

OXUS DIAMOND TIP:

OXUS ASPIRATION TIP:

OXUS FISH MOUTH TIP:

OXUS ATRAUMATIC TIP:

OXUS Explant/Transplant VERSION:

SINGLE BOX: 10 PCS.



www.medax.it

Medax Srl Unipersonale · via R. Piva 1/a · 46025 Poggio Rusco (MN) Italy · tel. +39 0386 522157-132 · fax +39 0386 522156 · customercare@medax.it



MEDLOCK

Bone marrow biopsy system with special (MM) or (MF)
safe and atraumatic sample extraction cannulas



Bone marrow biopsy system provided with special (MM) or (MF) safe and atraumatic sample extraction cannulas. Medlock is designed following the classical and reliable features to perform a bone marrow histological biopsy.

Technical characteristics:

- Ergonomic handle.
- Available in different versions: Trocar, Aspiration or Fish Mouth tip.
- The "MM" and "MF" additional extraction cannulas allow to get the sample in a completely atraumatic and safe way and to hold it without any damage to its surface and inner structure until extraction.
- Luer Lock connection for syringe.
- Remover guide provided with indicators to facilitate the sample expulsion and to be able to check the length of the sample during the procedure.
- Sterilized by ETO, shelf life 5 years.

medax
medical devices

www.medax.it

MEDLOCK

Bone marrow biopsy system with special (MM) or (MF)
safe and atraumatic sample extraction cannulas

GAUGE	COLOUR	LENGHT (MM)	
8	Dark Green	08 100	08 150
9	Pink	09 100	09 150
11	White	11 100	11 150
13	Light Blue	13 100	13 150

Different sizes on demand

Ordering information:

MEDLOCK "M" DIAMOND TIP:

MEDLOCK "M" BONE MARROW ASPIRATION:

MEDLOCK "M" FISH MOUTH TIP:

MEDLOCK "F" DIAMOND TIP:

MEDLOCK "F" BONE MARROW ASPIRATION:

MEDLOCK "F" FISH MOUTH TIP:

SINGLE BOX: 10 PCS.



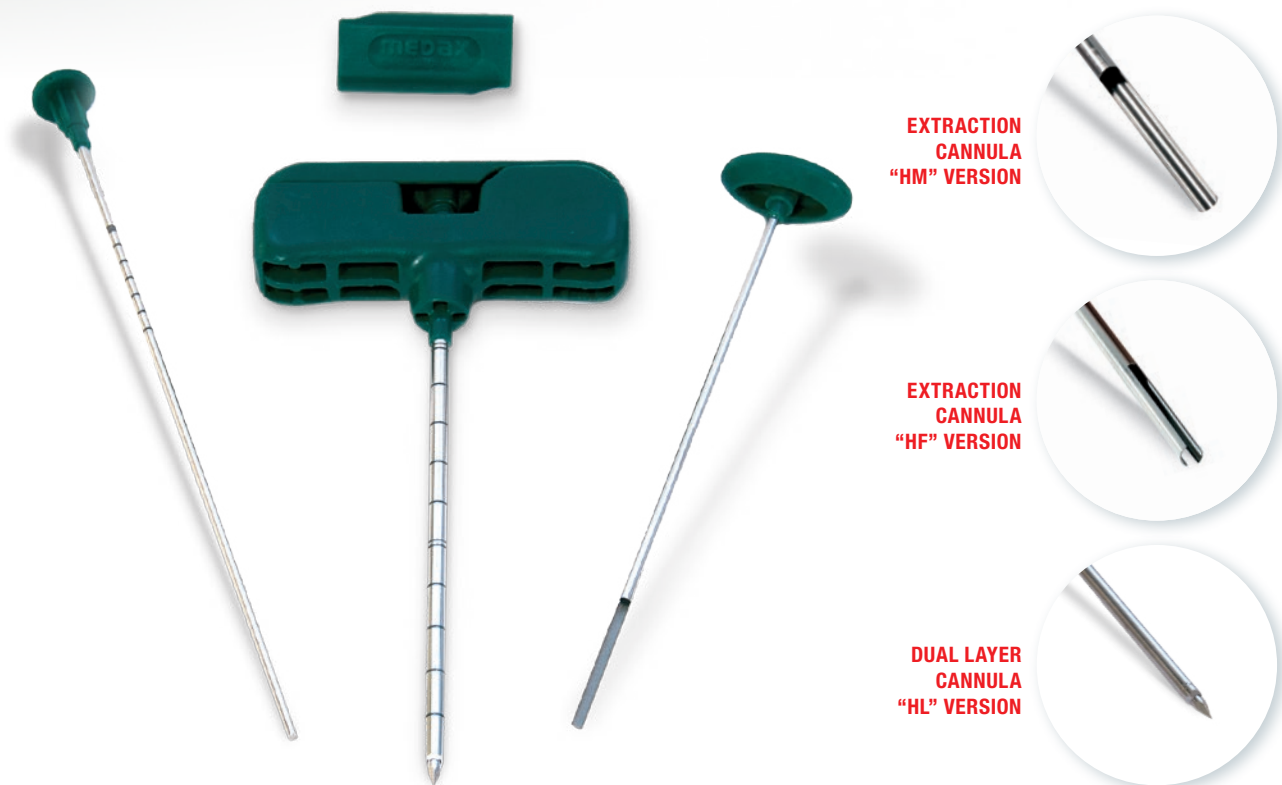
www.medax.it

Medax Srl Unipersonale · via R. Piva 1/a · 46025 Poggio Rusco (MN) Italy · tel. +39 0386 522157-132 · fax +39 0386 522156 · customercare@medax.it



HEMAX

Bone marrow biopsy system with special (HM) or (HF) safe and atraumatic sample extraction cannulas



EXTRACTION
CANNULA
"HM" VERSION

EXTRACTION
CANNULA
"HF" VERSION

DUAL LAYER
CANNULA
"HL" VERSION

Bone marrow biopsy system provided with special (HM) or (HF) safe and atraumatic sample extraction cannulas. Hemax is designed following the classical and reliable features to perform a bone marrow histological biopsy.

Technical characteristics:

- Ergonomic handle.
- Available in different versions: Trocar, Aspiration or Fish Mouth tip.
- The "HM" and "HF" additional extraction cannulas allow to get the sample in a completely atraumatic and safe way and to hold it without any damage to its surface and inner structure until extraction.
- Luer Lock connection for syringe.
- Remover guide provided with indicators to facilitate the sample expulsion and to be able to check the length of the sample during the procedure.
- Sterilized by ETO, shelf life 5 years.

medax
medical devices

www.medax.it

HEMAX

Bone marrow biopsy system with special (HM) or (HF)
safe and atraumatic sample extraction cannulas

GAUGE	COLOUR	LENGHT (MM)	
8	Dark Green	08 100	08 150
9	Pink	09 100	09 150
11	White	11 100	11 150
13	Light Blue	13 100	13 150

Different sizes on demand

Ordering information:

HEMAX "M" DIAMOND TIP:

GAUGE LENGHT
H M **0 0**

HEMAX "M" BONE MARROW ASPIRATION:

GAUGE LENGHT
H M **0 1**

HEMAX "M" FISH MOUTH TIP:

GAUGE LENGHT
H M **0 2**

HEMAX "F" DIAMOND TIP:

GAUGE LENGHT
H F **0 0**

HEMAX "F" BONE MARROW ASPIRATION:

GAUGE LENGHT
H F **0 1**

HEMAX "F" FISH MOUTH TIP:

GAUGE LENGHT
H F **0 2**

SINGLE BOX: 10 PCS.



www.medax.it

Medax Srl Unipersonale - via R. Piva 1/a - 46025 Poggio Rusco (MN) Italy - tel. +39 0386 522157-132 - fax +39 0386 522156 - customercare@medax.it



CAGE

Bone marrow biopsy needle with internal atraumatic cannula and safe sample extraction system



Bone marrow biopsy system provided with an internal atraumatic cannula and safe sample extraction system. Cage has been designed following classical and reliable features in order to perform an atraumatic bone marrow biopsy.

Technical characteristics:

- Ergonomic handle.
- Diamond tip stylet and special cannula with 5 cutting edges.
- The cannula is internally provided with a special patented mechanism that cuts the bone sample and holds it without any damage to its surface and inner structure.
- Luer Lock connection for syringe.
- Remover guide provided with indicators to facilitate the sample expulsion and to be able during the procedure to check the length of the sample.
- Sterilized by ETO, shelf life 5 years.

medax
medical devices

www.medax.it

CAGE

Bone marrow biopsy needle with internal atraumatic cannula and safe sample extraction system

GAUGE	COLOUR	LENGHT (MM)	
8	Dark Green	08 100	08 150
9	Pink	09 100	09 150
11	White	11 100	11 150

Different sizes on demand

Ordering information:

CAGE DIAMOND TIP:

C A GAUGE LENGHT 0 0

SINGLE BOX: 10 PCS.

medax
medical devices

www.medax.it

Medax Srl Unipersonale - via R. Piva 1/a - 46025 Poggio Rusco (MN) Italy - tel. +39 0386 522157-132 - fax +39 0386 522156 - customercare@medax.it

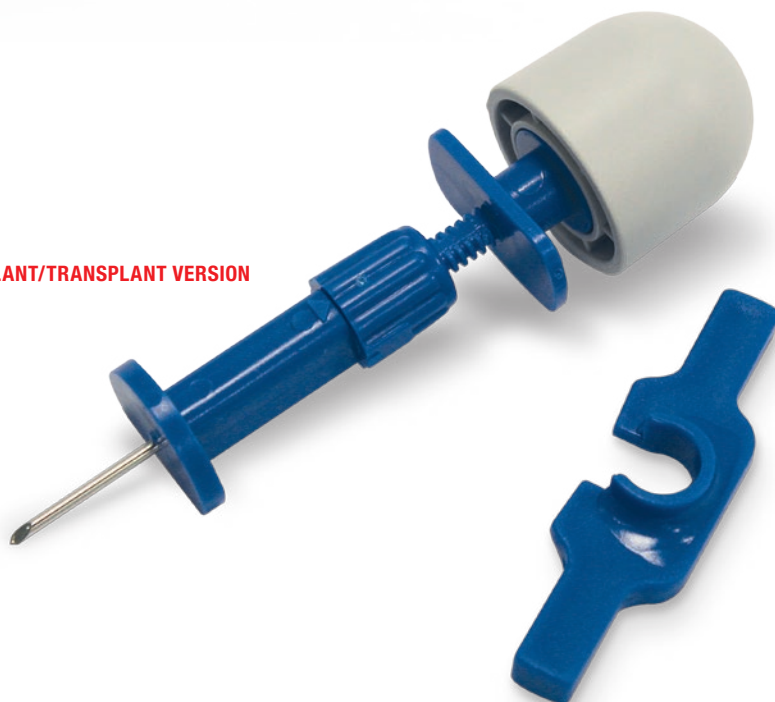


MIELOX

Bone Marrow aspiration system with ergonomic handle
Also available in the explant/transplant version



EXPLANT/TRANSPLANT VERSION



Bone Marrow aspiration system with ergonomic handle and additional wings (MA). The wings and the ergonomic handle allow a better grip during the procedure performed both in the sternal and iliac crest regions. Also available in the explant/transplant version (ME).

Technical characteristics:

- The ergonomic handle allows a comfortable procedure and a firm grip.
- Triple sharpened tip cannula to allow a non traumatic, fast and easy penetration into the bone marrow cavity.
- Adjustable depth setter with sliding mechanism for a fast and precise setting.
- Luer Lock connection for syringe.
- Sterilized by ETO, shelf life 5 years.

MIELOX

Bone Marrow aspiration system with ergonomic handle
Also available in the explant/transplant version

GAUGE	COLOUR	LENGHT (MM)							
14	Green	14 020	14 030	14 035	14 040	14 045	14 050	14 055	14 060
15	Blue	15 020	15 030	15 035	15 040	15 045	15 050	15 055	15 060
16	White	16 020	16 030	16 035	16 040	16 045	16 050	16 055	16 060
18	Pink	18 020	18 030	18 035	18 040	18 045	18 050	18 055	18 060

GAUGE	COLOUR	LENGHT (MM)								
14	Green	14 065	14 070	14 075	14 080	14 085	14 090	14 095	14 100	14 150
15	Blue	15 065	15 070	15 075	15 080	15 085	15 090	15 095	15 100	15 150
16	White	16 065	16 070	16 075	16 080	16 085	16 090	16 095	16 100	16 150
18	Pink	18 065	18 070	18 075	18 080	18 085	18 090	18 095	18 100	18 150

Different sizes on demand

Ordering information:

MIELOX ASPIRATION TIP:

M A 0 0

MIELOX ASPIRATION TIP WITH WINGS:

M A 1 0

MIELOX EXPLANT/TRANSPLANT TIP:

M E 0 0

MIELOX EXPLANT/TRANSPLANT TIP WITH WINGS:

M E 1 0

SINGLE BOX: 10 PCS.

medax
medical devices

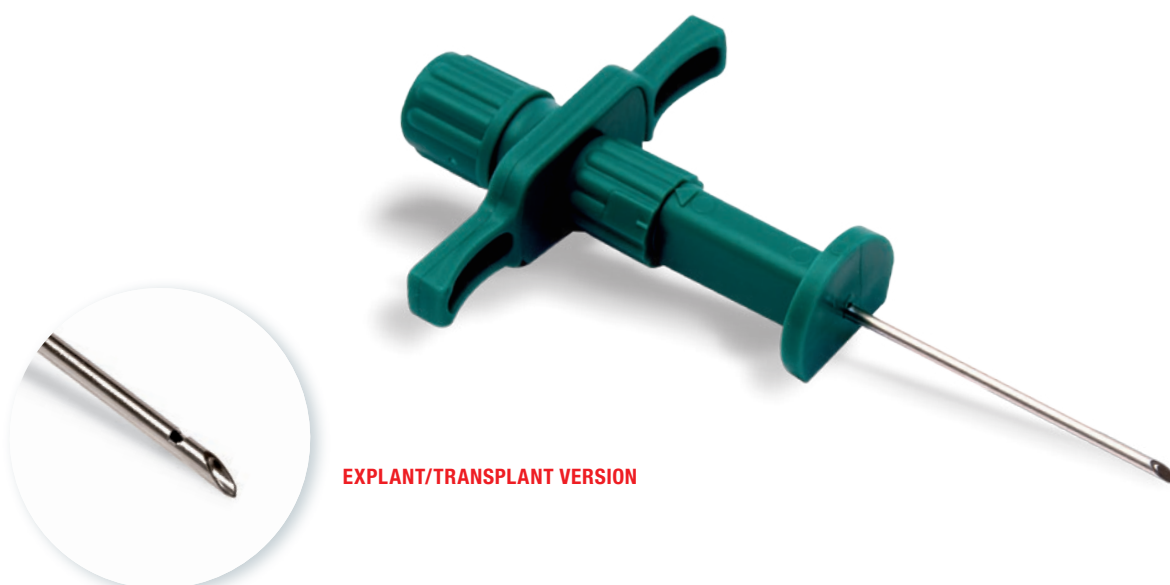
www.medax.it

Medax Srl Unipersonale · via R. Piva 1/a · 46025 Poggio Rusco (MN) Italy · tel. +39 0386 522157-132 · fax +39 0386 522156 · customercare@medax.it



PERFECTUS

Bone marrow aspiration system (PS), also available
in the explant/transplant version (PF)



Bone marrow aspiration system with additional wings and optional ergonomic handle (PS). The wings and the ergonomic handle allow a better grip during the procedure performed both in the sternal and iliac crest regions. Also available in the explant/transplant version (PF).

Technical characteristics:

- Suitable to perform bone marrow aspiration and/or Explant/Transplant from both the sternum and the iliac crest.
- Triple sharpened tip cannula to allow a non traumatic, fast and easy penetration into the bone marrow cavity.
- Adjustable needle stop with millimetre scale control.
- Luer Lock connection for syringe.
- Sterilized by ETO, shelf life 5 years.

medax
medical devices

www.medax.it

PERFECTUS

Bone marrow aspiration system (PS), also available
in the explant/transplant version (PF)

GAUGE	COLOUR	LENGHT (MM)							
14	Green	14 020	14 030	14 035	14 040	14 045	14 050	14 055	14 060
15	Blue	15 020	15 030	15 035	15 040	15 045	15 050	15 055	15 060
16	White	16 020	16 030	16 035	16 040	16 045	16 050	16 055	16 060
18	Pink	18 020	18 030	18 035	18 040	18 045	18 050	18 055	18 060

GAUGE	COLOUR	LENGHT (MM)								
14	Green	14 065	14 070	14 075	14 080	14 085	14 090	14 095	14 100	14 150
15	Blue	15 065	15 070	15 075	15 080	15 085	15 090	15 095	15 100	15 150
16	White	16 065	16 070	16 075	16 080	16 085	16 090	16 095	16 100	16 150
18	Pink	18 065	18 070	18 075	18 080	18 085	18 090	18 095	18 100	18 150

Different sizes on demand

Ordering information:

PERFECTUS ASPIRATION TIP:

P S 1 0

PERFECTUS ASPIRATION TIP with ergonomic handle:

P S 1 1

PERFECTUS Explant/Transplant TIP:

P F 1 0

PERFECTUS Explant/Transplant TIP with ergonomic handle:

P F 1 1

SINGLE BOX: 10 PCS.

medax
medical devices

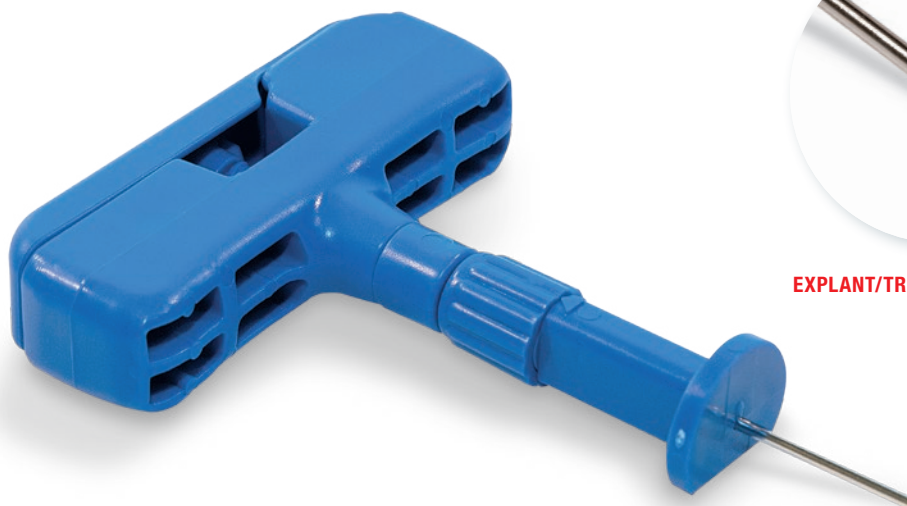
www.medax.it

Medax Srl Unipersonale · via R. Piva 1/a · 46025 Poggio Rusco (MN) Italy · tel. +39 0386 522157-132 · fax +39 0386 522156 · customercare@medax.it



HANDLEX

Bone marrow aspiration system with ergonomic handle (HN), also available in the explant/transplant version (HD)



EXPLANT/TRANSPLANT VERSION

Bone marrow aspiration system with ergonomic handle (HN). The special handle allows a better grip during the procedure in the sternum and iliac crest. Explant/Transplant version also available (HD).

Technical characteristics:

- Suitable to perform bone marrow aspiration and Explant/Transplant from both the sternum and the iliac crest regions.
- Triple sharpened tip cannula to allow a non traumatic, fast and easy penetration into the bone marrow cavity.
- Adjustable depth setter with sliding mechanism for a fast and precise setting.
- Luer Lock connection for syringe.
- Sterilized by ETO, shelf life 5 years.

medax
medical devices

www.medax.it

HANDLEX

Bone marrow aspiration system with ergonomic handle (HN),
also available in the explant/transplant version (HD)

GAUGE	COLOUR	LENGHT (MM)					
14	Green	14 030	14 040	14 050	14 070	14 090	14 110
15	Blue	15 030	15 050	15 050	15 070	15 090	15 110
16	White	16 030	16 040	16 050	16 070	16 090	16 110
18	Pink	18 030	18 040	18 050	18 070	18 090	18 110

Different sizes on demand

Ordering information:

HANDLEX ASPIRATION TIP:

H
N

0
0

HANDLEX Explant/Transplant TIP:

H
D

0
0

SINGLE BOX: 10 PCS.

medax
medical devices

www.medax.it

Medax Srl Unipersonale · via R. Piva 1/a · 46025 Poggio Rusco (MN) Italy · tel. +39 0386 522157-132 · fax +39 0386 522156 · customercare@medax.it

